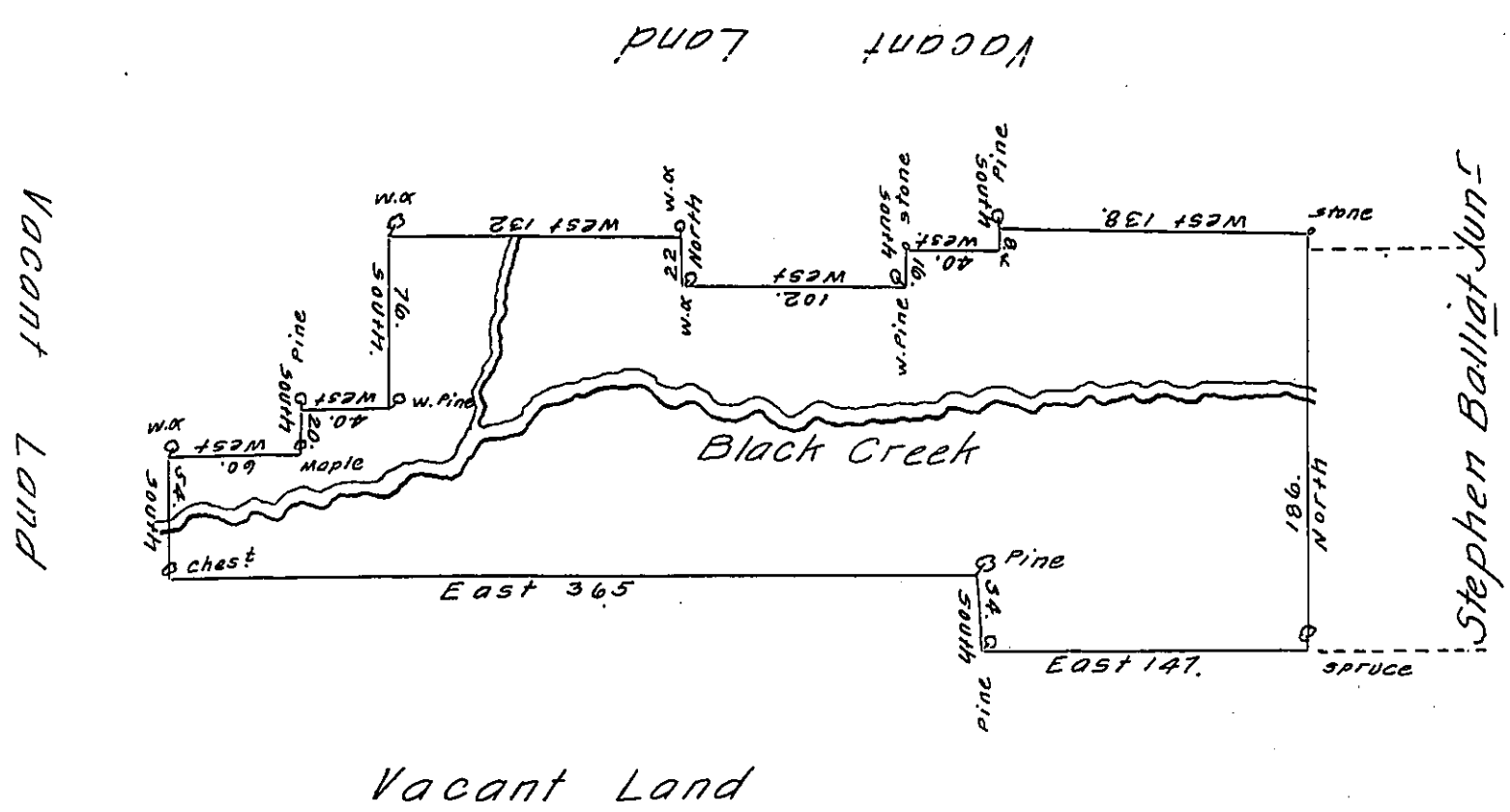


Hazle -  
Luzerne.



365  
147  
-----  
512

By Virtue of a Warrant dated the 5<sup>th</sup> March 1789. Surveyed the 23<sup>d</sup> May 1789. to Mathew Eggert the above described tract of Land situate on a branch of Nescopeck called Black Creek in Northampton County. Containing Four Hundred and seventeen Acres. Sixty three perches and the Allowance of Six # Cent &c

Geo. Palmer -

Daniel Broadhead Esq<sup>r</sup> }  
Survey<sup>r</sup> General. }

IN TESTIMONY that the above is a copy of the original remaining on file in the Department of Internal Affairs of Pennsylvania, made conformably to an Act of Assembly approved the 16th day of February, 1833, I have hereunto set my Hand and caused the Seal of said Department to be affixed at Harrisburg, this thirty first day of January 1911.

*Nehy Howell*  
Secretary of Internal Affairs.